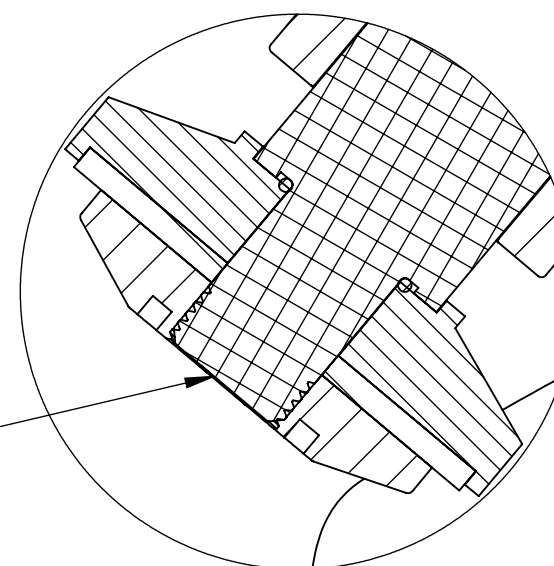
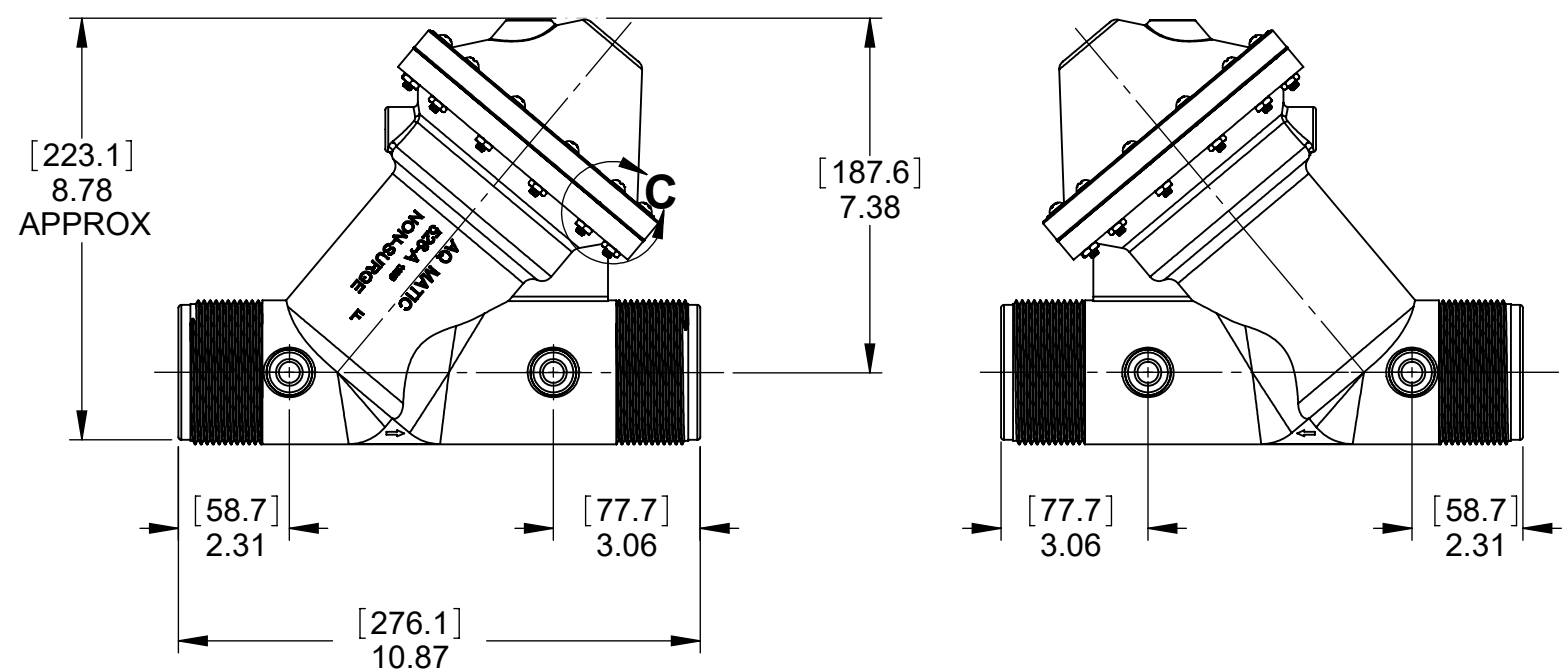


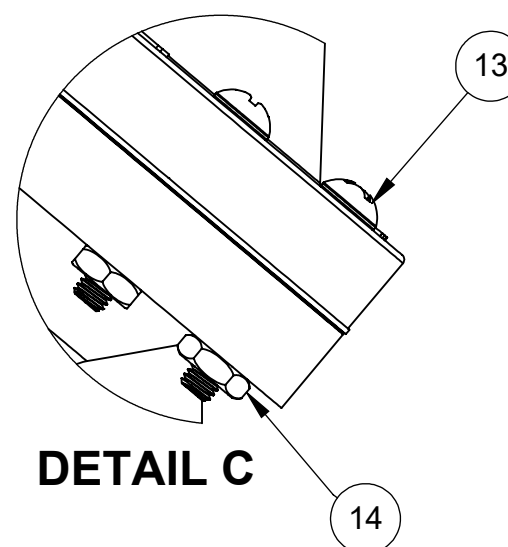
ASSEMBLY TOOLS	
DESCRIPTION	PART NO.
FOR INSTALLATION & REMOVAL OF SHAFT (ITEM #4) (TOOL NOT SHOWN)	1077837
FOR INSTALLATION & REMOVAL OF UPPER DIAPHRAGM PLATE (ITEM #11) (TOOL NOT SHOWN)	1075224 (526-Z)

TORQUE TABLE		
ITEM #	DESCRIPTION	TORQUED TO (+/- 10%)
2	PLATE, DISC	22.5 IN-LB
11	UPR. DIA. PLATE	40 IN-LB
13 & 14	CA P SCREW & NUT	32.5 IN-LB

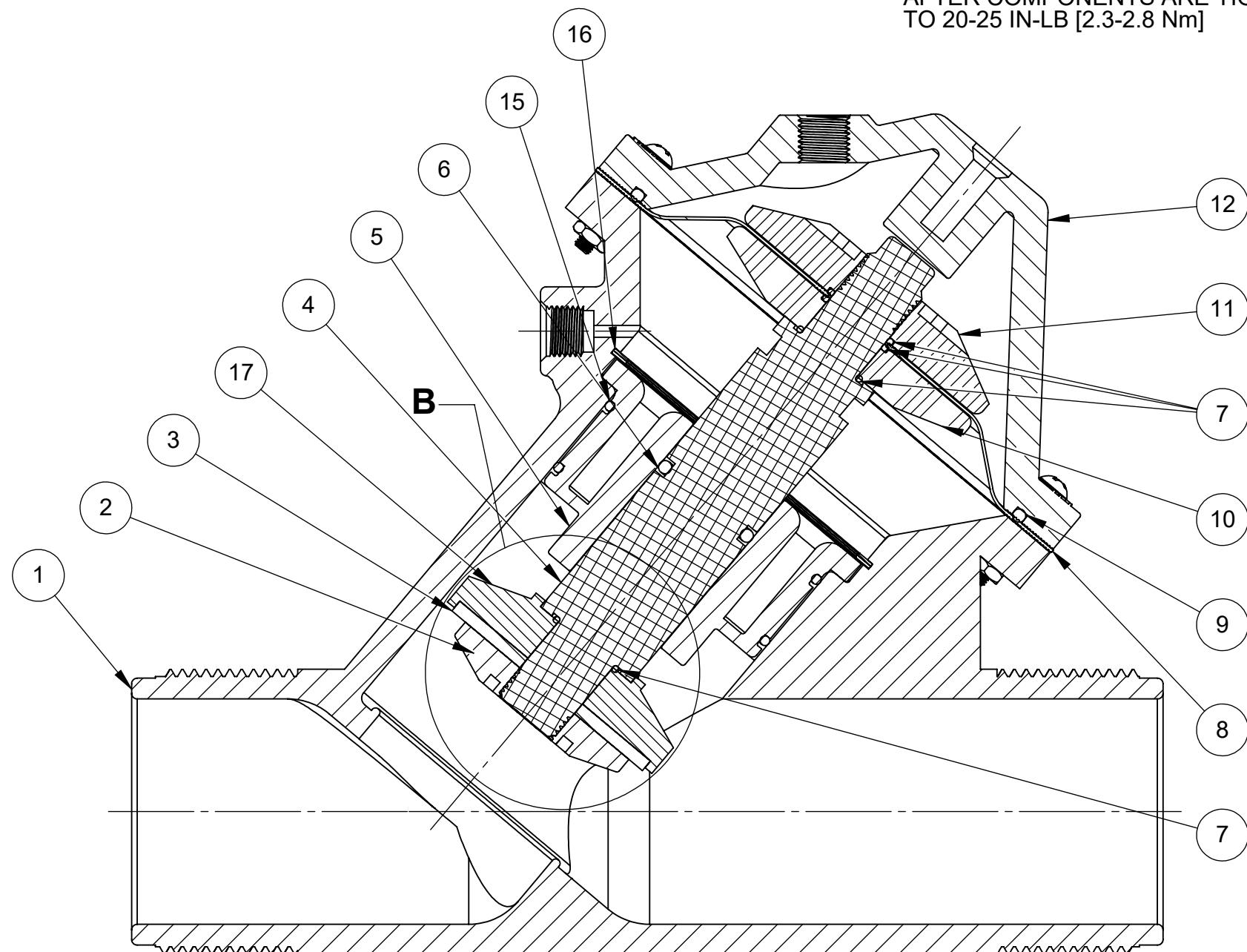


DISC NUT/SHAFT TO BE FLUSH AFTER COMPONENTS ARE TIGHTENED TO 20-25 IN-LB [2.3-2.8 Nm]

DETAIL B



DETAIL C



REVISIONS				
ECN	REV.	DESCRIPTION	DATE	APP'D
100401	L	1- WAS: 1075174,-NOW:43051 2-REM'D:1075172 NORYL SHAFT	03/30/12	TJM
101856	M	1-WAS 1071746- NOW: 1010140	03/19/13	TJM
103884	N	ITEM # 31- WAS 1074970, 2- UPDATED TITLE BLOCK	10/16/14	TJM
1001	O	AQ TEMPLATE UPDATE & VERIFIED PART NUMBERS	01/17/17	MGS
1507	P	REMOVE BR FROM DRW NUMBER, CORRECT MINOR ERRORS, ADD TORQUE TABLE	05/14/19	KJB
1964	Q	CATALOG SHEET UPDATE WITH MODEL NUMBERS	11/1/21	TRK

NORMALLY OPEN MODEL				
ITEM NO.	DESCRIPTION		PART NUMBER	QTY.
1	BODY, 526	NORYL	1075162 (526-AK)	1
2	DISC PLATE, 526	NORYL	1075176 (526-EK)	1
3	DISC	EPDM	1075181 (526-J)	1
		BUTYL	1075182 (526-JJ)	
		FKM	1075183 (526-JV)	
4	SHAFT	PVC	43119	1
5	SHAFT GUIDE	NORYL	1075178 (526-GK)	1
6	O-RING, 2-214	EPDM	1010140 (ORE-214)	1
		BUTYL	1071778 (ORJ-214)	
		FKM	1071817 (ORV-214)	
7	O-RING, 2-018	EPDM	1071673 (ORE-218)	4
		BUTYL	1071762 (ORJ-218)	
		FKM	1071790 (ORV-218)	
8	DIAPHRAGM	BUNA	1075177 (526-FB)	1
9	O-RING, 2-251	BUNA	1071713 (ORB-251)	1
10	LWR. DIAP. PLATE	NORYL	43051	1
11	UPR. DIAP. PLATE	NORYL	43050	1
12	CAP, 526	NORYL	1075167 (526-BOK)	1
13	SCREW, 10-32 X 1 1/4" RND HD	SS	1072382 (SCS-0098)	12
14	HEX NUT, 10-32	SS	1071648 (NUS-0006)	12
15	O-RING, 2-148	EPDM	1071738 (ORE-148)	2
		BUTYL	1071773 (ORJ-148)	
		FKM	1071810 (ORV-148)	
16	RETAINING RING	SS	1075180 (526-HA)	1
17	DISC HOLDER	PVC	1075197 (526-RP)	1

REPAIR PARTS KITS		
DIAPHRAGM & SEALS KIT CONSISTS OF ITEM NO'S 3,6,7(4),8,9,15(2)	1070275 (526-RA) EPDM INCLUDES DIAPHRAGM 1075177 (526-FB)	1070283 (526-RAJ) BUTYL INCLUDES DIAPHRAGM 1075177 (526-FB)
	1070291 (526-RAV) FKM INCLUDES DIAPHRAGM 1075177 (526-FB)	
INT. PARTS KIT (NORM. OPEN) CONSISTS OF ITEM NO'S 2,4,5,10,11,17	1070299 (K526-RF)	

1070180 (K526-X200-14000)  
**NORMALLY OPEN (STANDARD)**

- SEE DRAWING 1081309 FOR THREADED SOCKET WELD ENDS AND THREADED FLANGED ADAPTORS
- SEE SHEET 2 FOR CONFIGURATION OPTIONS

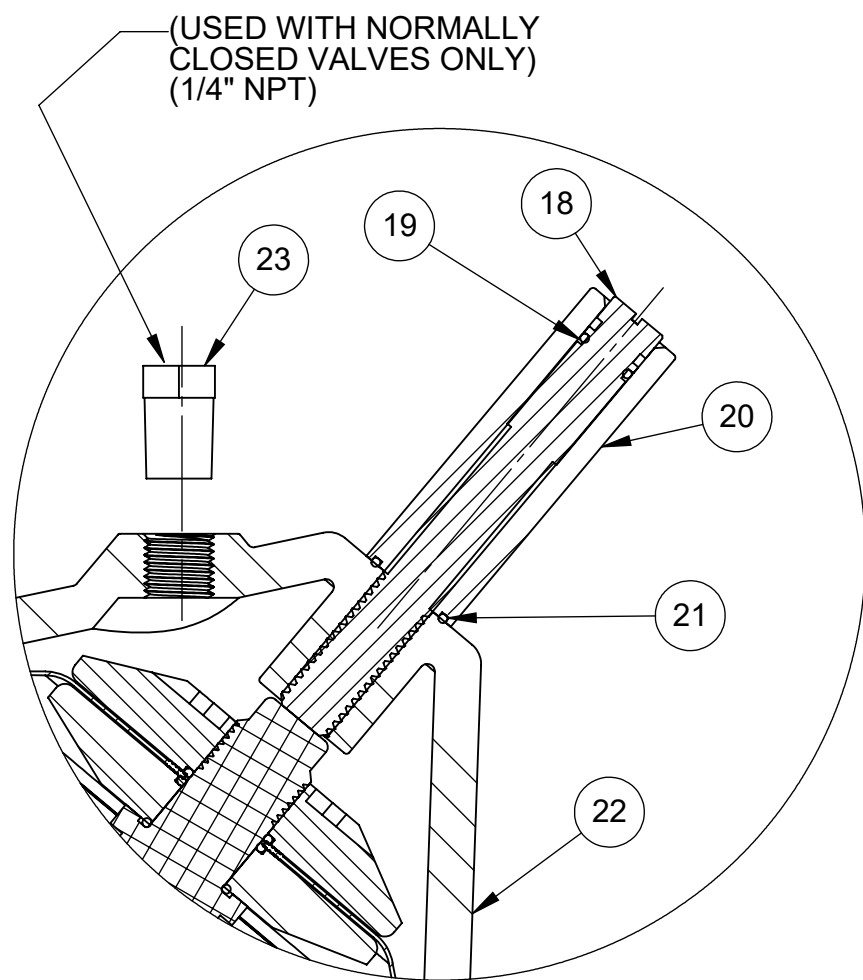
THIS DOCUMENT IS SOLELY THE PROPERTY OF AQ-MATIC REPRODUCTION, USE DISCLOSURE, OR TRANSMISSION OF THIS DOCUMENT OR DETAILS CONTAINED HEREIN, IN PART OR IN WHOLE, IS PROHIBITED WITHOUT THE WRITTEN CONSENT OF AQ-MATIC ENGINEERING. THIS DOCUMENT AND ANY COPIES SHALL BE RETURNED TO AQ-MATIC UPON WRITTEN REQUEST.

DO NOT SCALE DRAWING. DIMS. ARE IN INCHES [mm] UNLESS OTHERWISE SPECIFIED:  
\*CORNER FILLETS R.005-.020 [0.127-.508]  
TOLERANCES:  
ANGLES: ± 1°  
1 PLACE .X: ± .100 [2.54]  
2 PLACE .XX: ± .010 [0.25]  
3 PLACE .XXX: ± .005 [0.13]

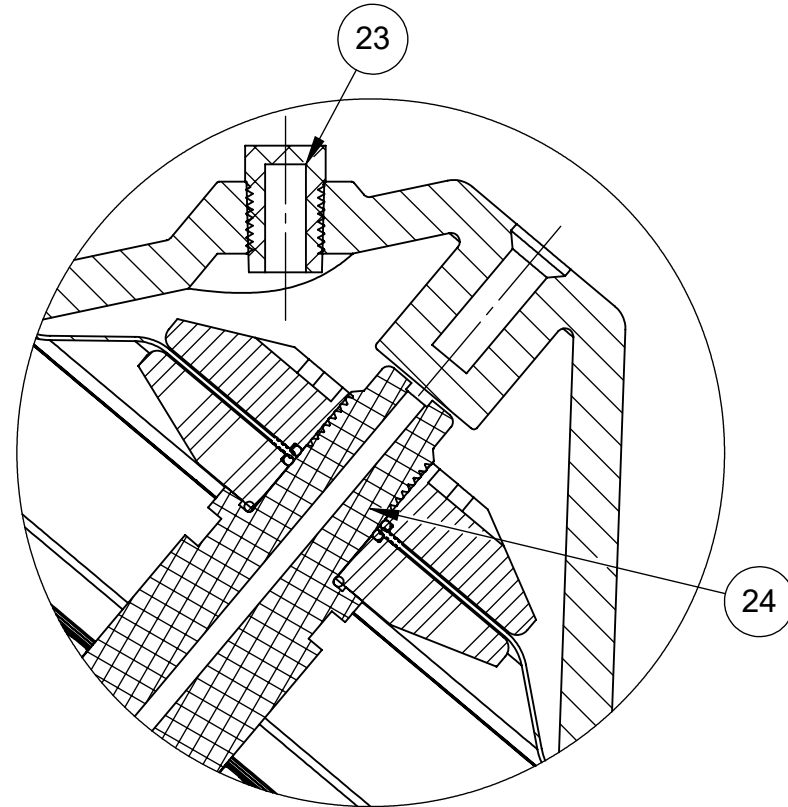
THE COMPONENT, PART, OR ASSEMBLY DESCRIBED IN THIS DOCUMENT MUST COMPLY WITH THE EU (EUROPEAN UNION) DIRECTIVE: RoHS DIRECTIVE 2011/65/EC.

THIRD ANGLE PROJECTION			
APPROVALS	DATE	CATALOG SHEET, 526 DIAPHRAGM VALVE	
DRAWN TRK	3/25/21	SIZE C	DWG NO. 1077656
CHECKED BY		SCALE 1:1	SOLIDWORKS FORMAT
APPROVED		SHEET 1 OF 2	REV. Q

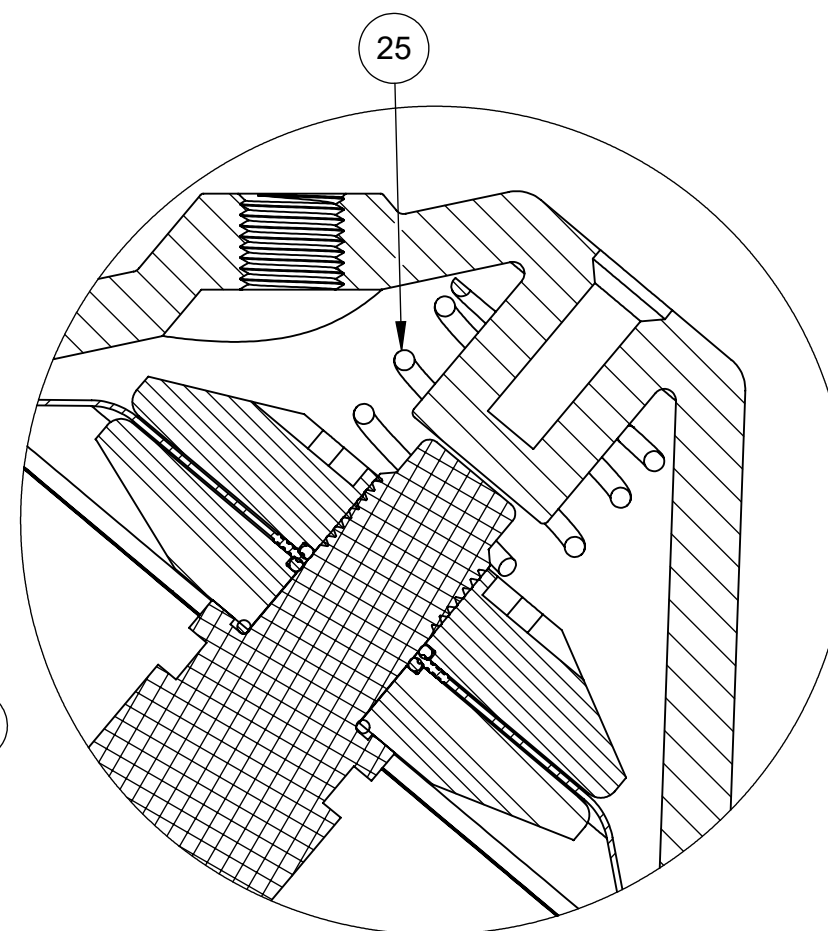




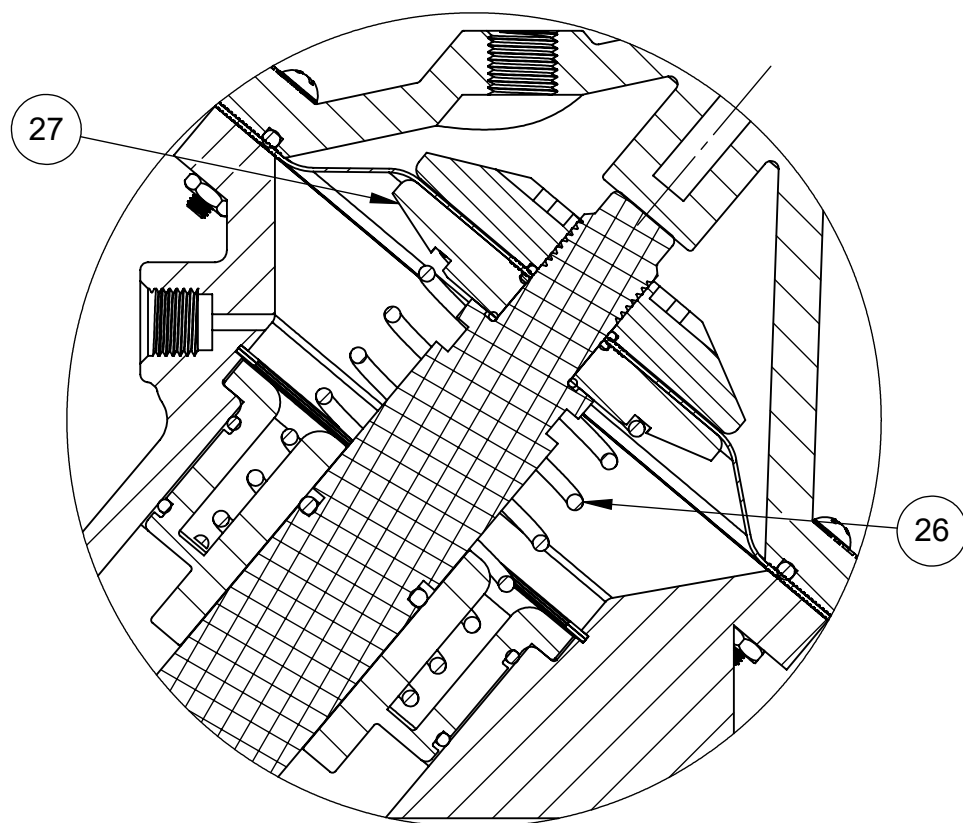
1070181 (K526-X210-14000)  
**LIMIT STOP**



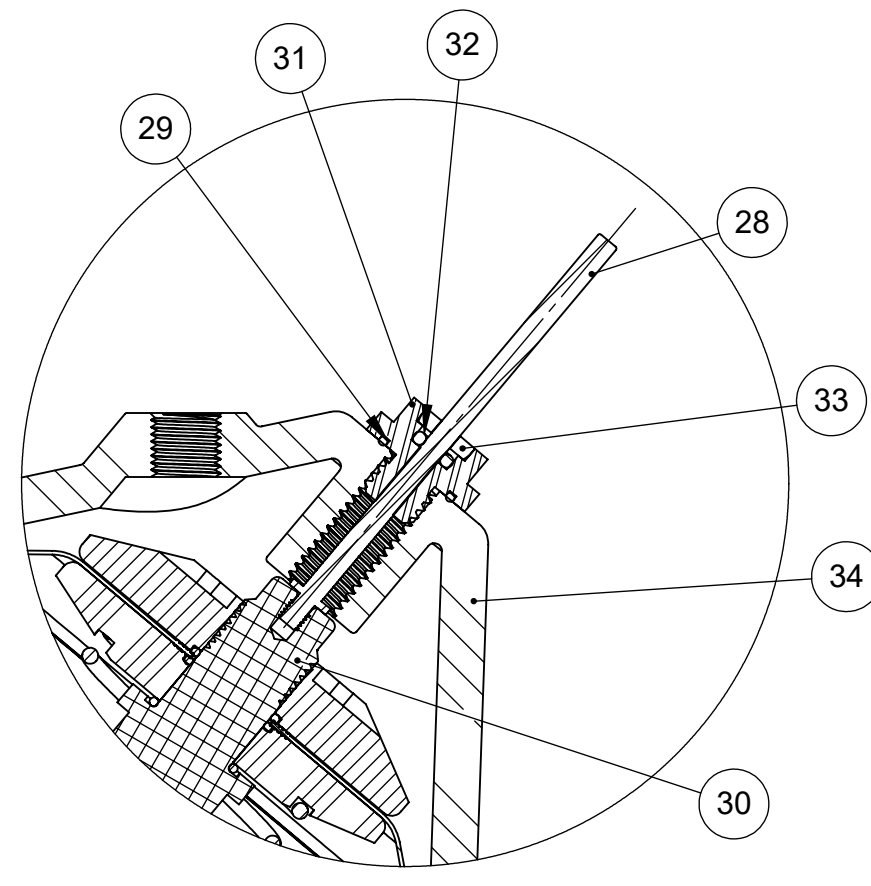
1071256 (K526-X230-14000)  
**NORMALLY CLOSED**



1071246 (K526-X202-14000)  
**SPRING ASSIST CLOSED**



1071242 (K526-X201-14000)  
**SPRING ASSIST OPEN**



1071255 (K526-X221-14000)  
**POSITION INDICATOR**

- SEE DRAWING 1081309 FOR THREADED SOCKET WELD ENDS AND THREADED FLANGED ADAPTORS
- SEE SHEET 1 FOR STANDARD NORMALLY OPEN MODEL

REVISIONS				
ECN	REV.	DESCRIPTION	DATE	APP'D
		SEE SHEET 1 FOR LIST OF CHANGES		

LIMIT STOP MODEL				
ITEM NO.	DESCRIPTION		PART NUMBER	QTY.
18	LIMIT STOP SCREW	SS	1075223	1
19	O-RING, 2-012	BUNA	1071668 (ORB-012)	1
20	LIMIT STOP NUT	SS	1075222	1
21	O-RING, 2-016	BUNA	1071671 (ORB-016)	1
22	CAP, LIMIT STOP	NORYL	1075165 (526-BBOK)	1
23	MALE PIPE PLUG 1/4"	HDPE	1071913 (PLP-0010)	1

NORMALLY CLOSED MODEL				
ITEM NO.	DESCRIPTION		PART NUMBER	QTY.
23	MALE PIPE PLUG 1/4"	HDPE	1071913 (PLP-0010)	1
24	SHAFT, VALVE, 526, NC	PVC	43143	1

SPRING ASSIST CLOSED				
ITEM NO.	DESCRIPTION		PART NUMBER	QTY.
25	SPRING, COMPRESSION	SS	1075202 (K526-T)	1

SPRING ASSIST OPEN MODEL				
ITEM NO.	DESCRIPTION		PART NUMBER	QTY.
26	SPRING, COMPRESSION	SS	1267399 (526-SS)	1
27	DIAPHRAGM PLATE, LOWER, 526, SAO	NORYL	1075175	1

POSITION INDICATOR MODEL				
ITEM NO.	DESCRIPTION		PART NUMBER	QTY.
28	ROD, PI, 526	SS	1075184 (526-KD)	1
29	O-RING, 2-016	BUNA	1071671 (ORB-016)	1
30	SHAFT, VALVE, 526, PI	PVC	43142	1
31	GUIDE HOUSING, 521	SS	1075038	1
32	O-RING, 2-106	BUNA	1071687	1
33	PLUG, GUIDE HOUSING, 520	SS	1074971	1
34	CAP, LIMIT STOP	NORYL	1075165 (526-BBOK)	1

- NOTES:
1. POSITION INDICATOR MODEL CANNOT BE COMBINED WITH NORMALLY CLOSED OR LIMIT STOP OPTIONS.
  2. POSITION INDICATOR MODEL FURNISHED WITH SPRING ASSIST OPEN OPTION.

CONVERSION KITS	
DESCRIPTION	PART NO.
CONVERSION KIT (LIMIT STOP) CONSISTS OF ITEM NO'S 18 THRU 22	1071225 (526-LSC)
CONVERSION KIT (SPRING ASSIST CLOSED) CONSISTS OF ITEM NO 25	1075200 (526-SC)
CONVERSION KIT (SPRING ASSIST OPEN) CONSISTS OF ITEM NO'S 26 & 27	1071227 (526-SO)
CONVERSION KIT (POSITION INDICATOR) CONSISTS OF ITEM NO'S 28 THRU 34	1079674 (K526-PIC)

REPAIR PARTS KITS	
DESCRIPTION	PART NO.
INT. PARTS KIT (LIMIT STOP) CONSISTS OF NO'S 18 THRU 21	1075191 (526-LS)
INT. PARTS KIT (NORM. CLOSED) CONSISTS OF ITEM NO'S 2,5,10,11,17, 24	1071226 (K526-RG)
INT. PARTS KIT (SPRING ASSIST CLOSED) CONSISTS OF ITEM NO. 25	1075200 (526-SC)
INT. PARTS KIT (SPRING ASSIST OPEN) CONSISTS OF ITEM NO'S 26 & 27	1071227 (526-SO)
INT. PARTS KIT (POSITION INDICATOR) CONSISTS OF ITEM NO'S 28 THRU 33	1081804 (526-PI)

THIS DOCUMENT IS SOLELY THE PROPERTY OF AQ-MATIC REPRODUCTION, USE DISCLOSURE, OR TRANSMISSION OF THIS DOCUMENT OR DETAILS CONTAINED HEREIN, IN PART OR IN WHOLE, IS PROHIBITED WITHOUT THE WRITTEN CONSENT OF AQ-MATIC ENGINEERING. THIS DOCUMENT AND ANY COPIES SHALL BE RETURNED TO AQ-MATIC UPON WRITTEN REQUEST.

DO NOT SCALE DRAWING. DIMS. ARE IN INCHES [mm] INTERPRET DIMS AND TOLERANCES PER ASME Y14.5M -1994 UNLESS OTHERWISE SPECIFIED:  
CORNER FILLETS R.005-.020 [0.127-.508]  
TOLERANCES:  
ANGLES: ± 1°  
1 PLACE .X: ± .100 [2.54]  
2 PLACE .XX: ± .010 [0.25]  
3 PLACE .XXX: ± .005 [0.13]

THIRD ANGLE PROJECTION

APPROVALS: TRK DATE: 3/25/21

CHECKED BY: APPROVED

THE COMPONENT, PART, OR ASSEMBLY DESCRIBED IN THIS DOCUMENT MUST COMPLY WITH THE EU (EUROPEAN UNION) DIRECTIVE: RoHS DIRECTIVE 2011/65/EC.

**AQ Matic**

CATALOG SHEET, SERIES 526 DIAPHRAGM VALVE

SIZE C DWG NO. 1077656 REV. Q

SCALE 1:1 SOLIDWORKS FORMAT SHEET 2 OF 2