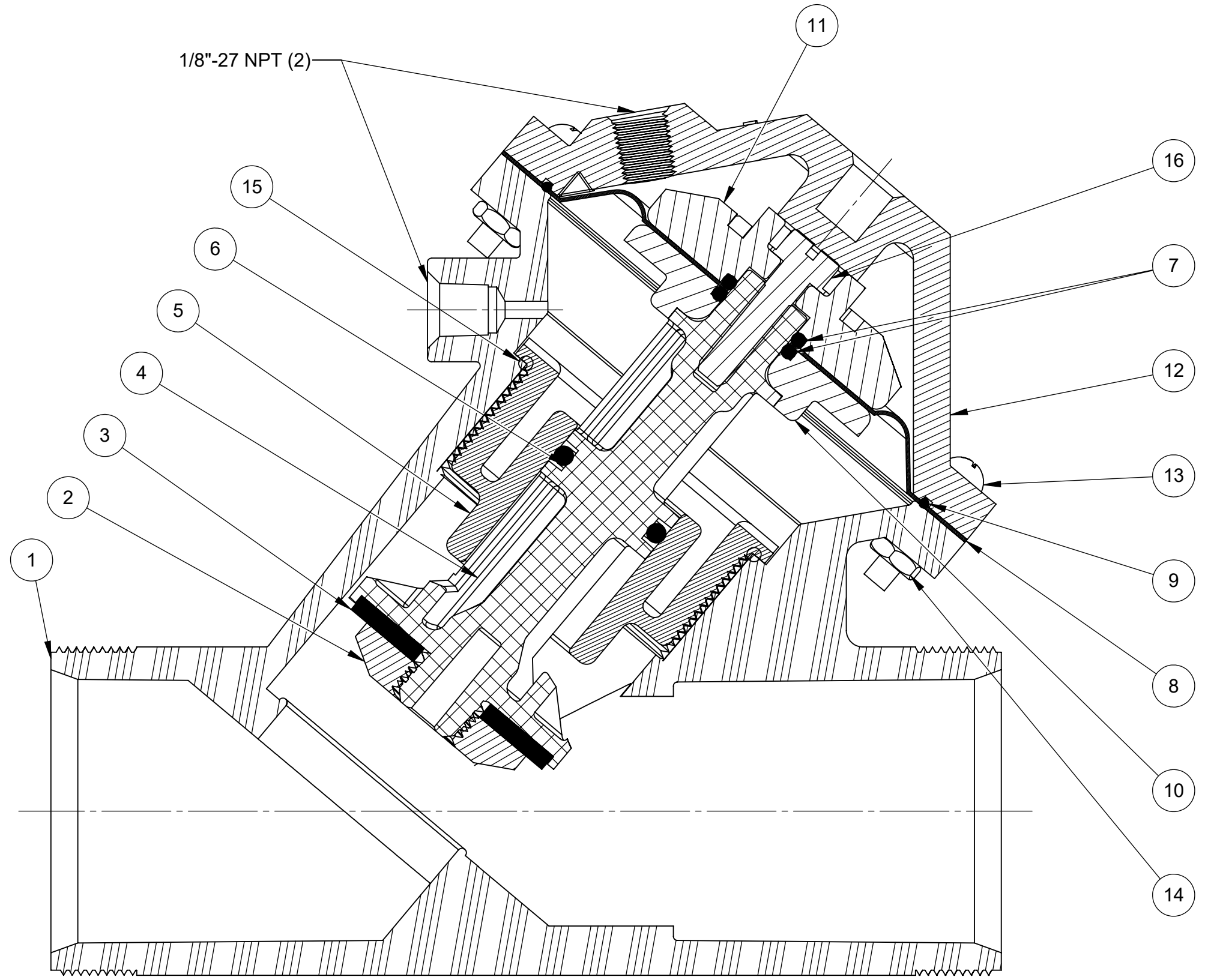


ASSEMBLY TOOLS	
DESCRIPTION	PART NO.
FOR INSTALLATION & REMOVAL OF SHAFT GUIDE (ITEM #5)	1075143 (524-Z)
TO HOLD SHAFT (ITEM #4) DURING ASSEMBLY/ DISASSEMBLY	1077837

TORQUE TABLE		
ITEM #	DESCRIPTION	TORQUED TO (+/- 10%)
2	PLATE, DISC	24 IN-LB
5	GUIDE, SHAFT	80 IN-LB
13 & 14	CA P SCREW & NUT	30 IN-LB
16	SCREW, CUTTING	35 IN-LB

REVISIONS				
ECN	REV.	DESCRIPTION	DATE	APP'D
101699	J	REDRAWN IN SOLIDWORKS, DWG # NOW SAME AS FORM #	03/14/14	TJM
1001	K	AQ Matic BRANDING UPDATE, AQ DRAWING TEMPLATE CONVERSION	01/17/17	MGS
1507	L	AQ Matic BRANDING UPDATE, CORRECT ERRORS, ADD TORQUE TABLE	05/03/19	KJB
1964	M	CATALOG SHEET UPDATE	11/1/21	TRK

NORMALLY OPEN MODEL				
ITEM NO.	DESCRIPTION	PART NUMBER	QTY.	
1	BODY, VALVE, 524	NORYL 1075079 (524-AK)	1	
2	PLATE, DISC, 524	NORYL 1076198	1	
3	DISC	EPDM 1075107 (524-J)	1	
		BUTYL 1075108 (524-JJ)		
		FKM 1075109 (524-JV)		
4	SHAFT, 524, NORMALLY OPEN	1076205	1	
5	GUIDE SHAFT, SERIES 5524	NORYL 1075106 (524-GK)	1	
		BUTYL 1071776 (ORJ-210)		
		EPDM 1071744 (ORE-210)		
6	O-RING, 2-210	FKM 1071815 (ORV-210)	1	
7	O-RING, 2-113	EPDM 1071728 (ORE-113)	2	
8	DIAPHRAGM, 524	BUNA 1078393 (524-FB)	1	
		FKM 1075105 (524-FV)		
9	O-RING, 2-043	BUNA 1071686 (ORB-043)	1	
10	PLATE, DIAPHRAGM, LOWER, 524	NORYL 1076197	1	
11	PLATE, DIAPHRAGM, UPPER, 524	NORYL 43041	1	
12	CAP, 524, VALVE	NORYL 1075086	1	
13	SCREW, #10-32 X 1", RND HD	SS 1072381 (SCS-0097)	12	
14	HEX NUT, 10-32	SS 1071648 (NUS-0006)	12	
15	O-RING, 2-137	EPDM 1071735 (ORE-137)	1	
		BUTYL 1071771 (ORJ-137)		
		FKM 1071807 (ORV-137)		
16	SCREW, CUTTING 1/4", TYPE BT	SS 1077101 (SCS-0168)	1	



- SEE DRAWING 1081309 FOR UNION END CONNECTORS AND GROOVED ADAPTORS
- SEE DRAWING 1078150 FOR THREADED SOCKET WELD ENDS AND THREADED FLANGED ADAPTORS
- SEE SHEET 2 FOR CONFIGURATION OPTIONS

REPAIR PARTS KITS		
DESCRIPTION	PART NO.	
DIAPHRAGM & SEALS KIT CONSISTS OF ITEM NO'S 3,6,7(2),8,9,15	1070274 (524-RAN) E.P.D.M. INCLUDES DIAPHRAGM 1075104 (524-FB)	1077592 (524-RAJN) BUTYL INCLUDES DIAPHRAGM 1075104 (524-FB)
	1070290 (524-RAVN) VITON INCLUDES DIAPHRAGM 1075104 (524-FB)	1077593 (524-RAVFN) VITON INCLUDES DIAPHRAGM 1075105 (524-FV)
INT. PARTS KIT (NORM. OPEN) CONSISTS OF ITEM NO'S 2,4,5,10,11,16	1070298 (K524-RFN)	

1070168 (K524-X200-14000)
NORMALLY OPEN (STANDARD)

THIS DOCUMENT IS SOLELY THE PROPERTY OF AQ-MATIC REPRODUCTION, USE DISCLOSURE, OR TRANSMISSION OF THIS DOCUMENT OR DETAILS CONTAINED HEREIN, IN PART OR IN WHOLE, IS PROHIBITED WITHOUT THE WRITTEN CONSENT OF AQ-MATIC ENGINEERING. THIS DOCUMENT AND ANY COPIES SHALL BE RETURNED TO AQ-MATIC UPON WRITTEN REQUEST.

DO NOT SCALE DRAWING. DIMS. ARE IN INCHES [mm] INTERPRET DIMS AND TOLERANCES PER ASME Y14.5M - 1994 UNLESS OTHERWISE SPECIFIED:
CORNER FILLETS R.005-.020 [.127-.508]
TOLERANCES:
ANGLES: ± 1°
1 PLACE .X: ± .100 [2.54]
2 PLACE .XX: ± .010 [0.25]
3 PLACE .XXX: ± .005 [0.13]

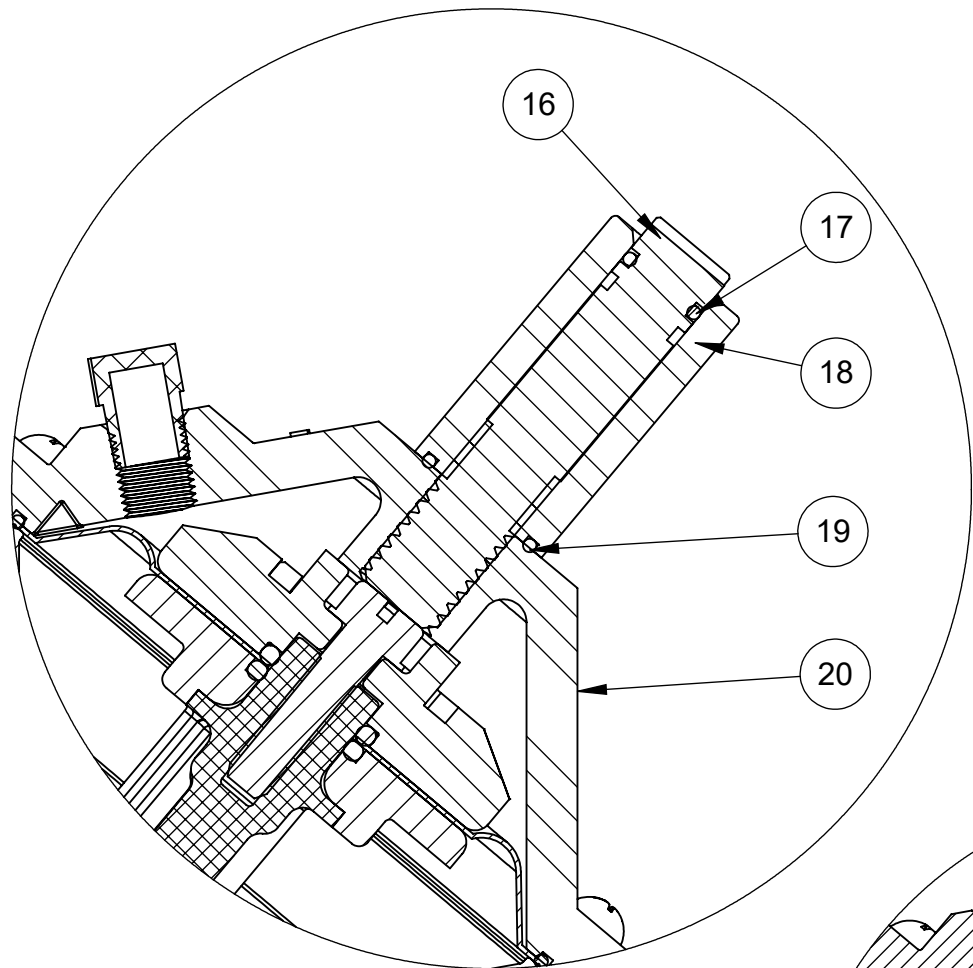
THE COMPONENT, PART, OR ASSEMBLY DESCRIBED IN THIS DOCUMENT MUST COMPLY WITH THE EU (EUROPEAN UNION) DIRECTIVE: RoHS DIRECTIVE 2011/65/EC.

THIRD ANGLE PROJECTION

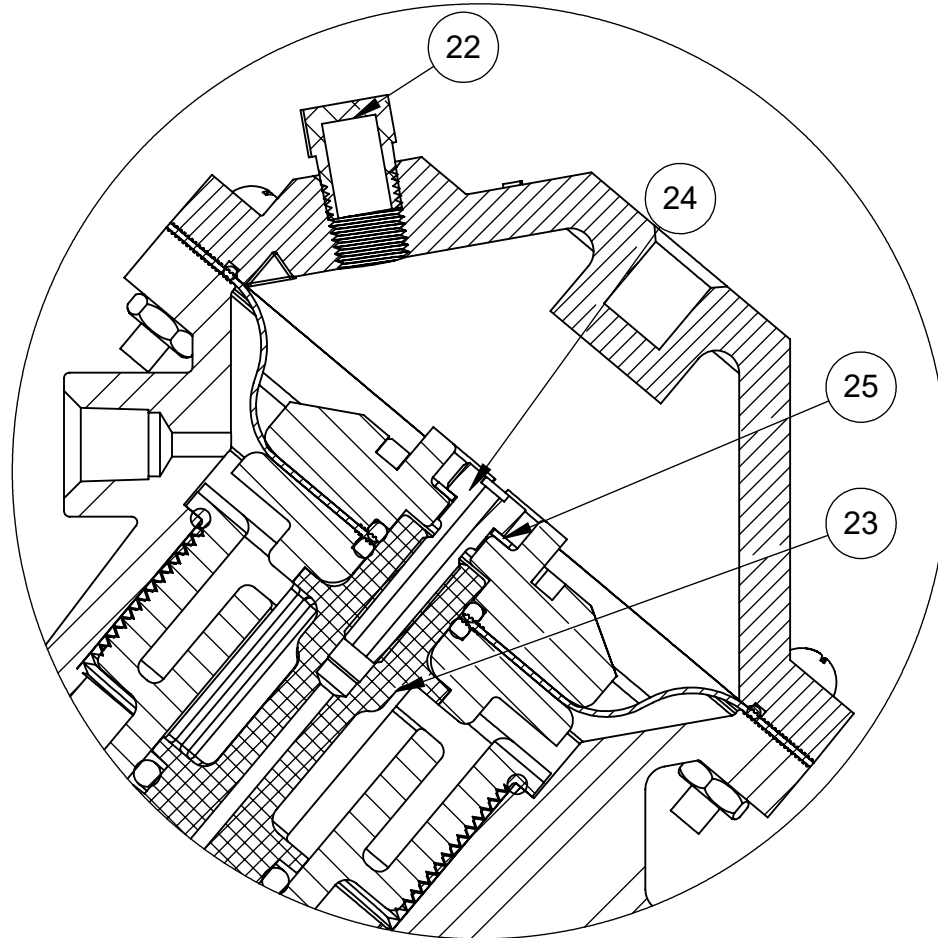
APPROVALS DATE
DRAWN NE 02-28-13
CHECKED BY
APPROVED

CATALOG SHEET, 524, VALVE STANDARD MODEL

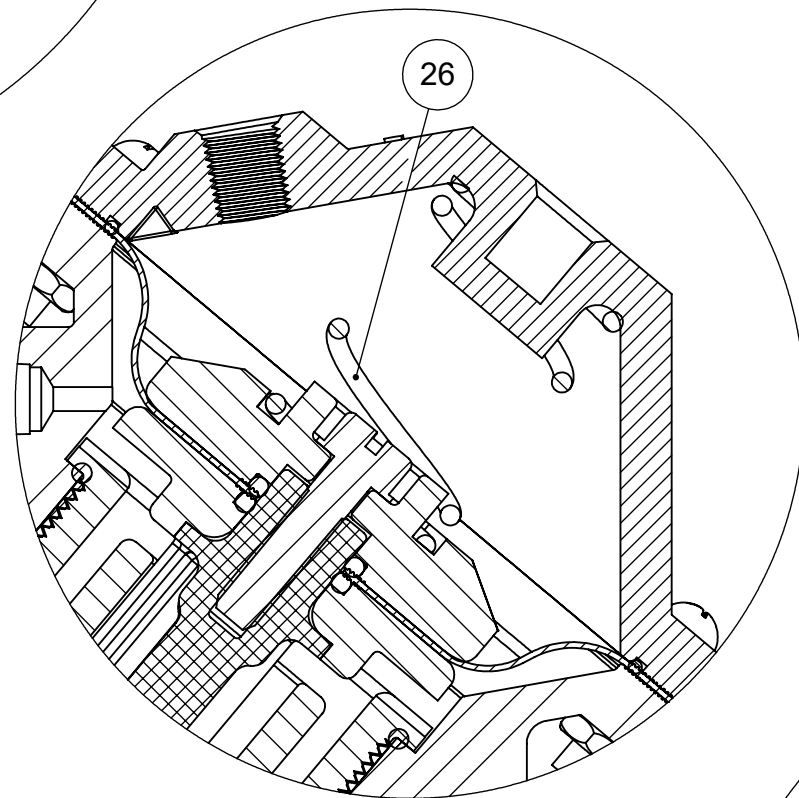
SIZE C DWG NO. 1077655 REV. M
SCALE 1:2 SOLIDWORKS FORMAT SHEET 1 OF 2



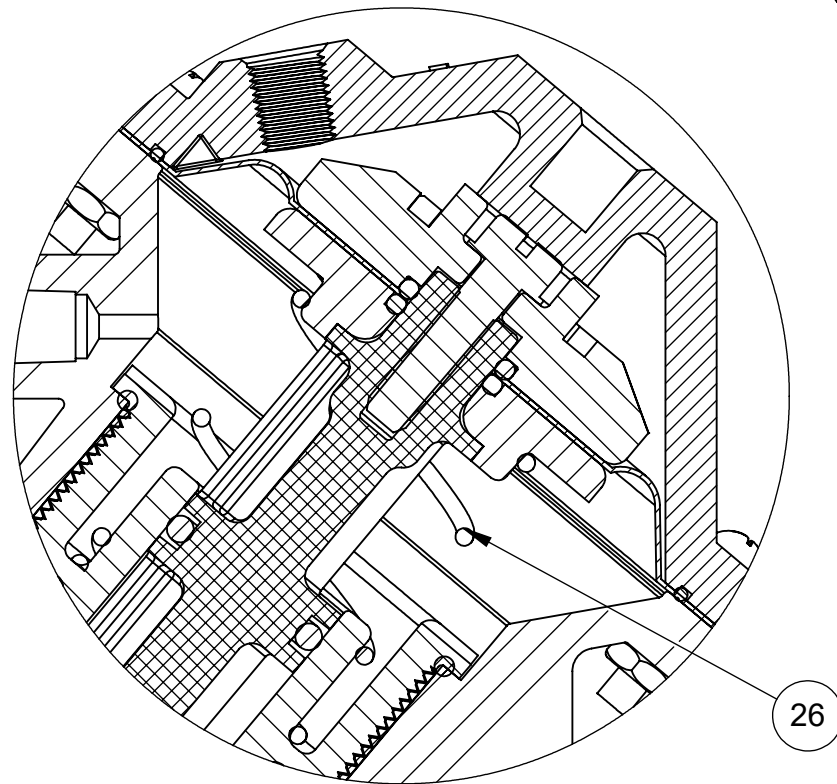
1070170 (K524-X210-14000)
LIMIT STOP



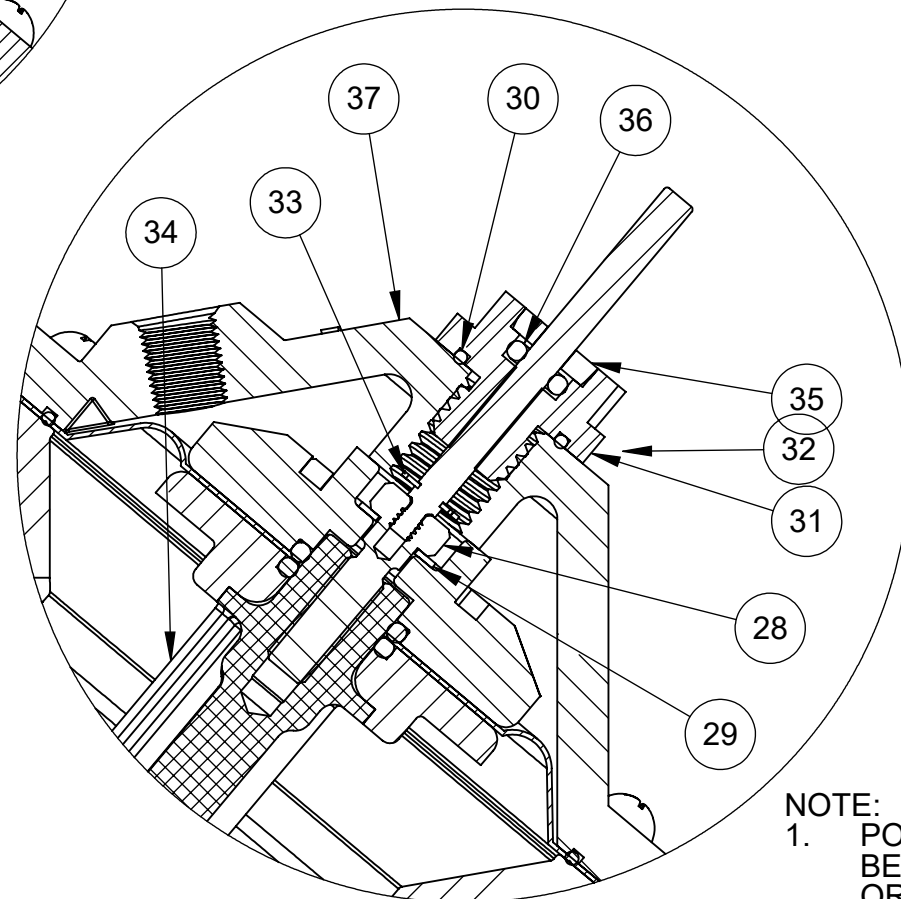
1070172 (K524-X230-14000)
NORMALLY CLOSED



1070171 (K524-X202-14000)
SPRING ASSIST CLOSED



1070169 (K524-X201-14000)
SPRING ASSIST OPEN



1071209 (K524-X221-14000)
POSITION INDICATOR

REVISIONS				
ECN	REV.	DESCRIPTION	DATE	APP'D
		SEE SHEET ONE FOR LIST OF CHANGES		

LIMIT STOP MODEL				
ITEM NO.	DESCRIPTION		PART NUMBER	QTY.
16	LIMIT STOP SCREW	SS	1075142 (524-Y)	1
17	O-RING, 2-012	BUNA	1071668 (ORB-012)	1
18	LIMIT STOP NUT	SS	1075141 (524-X)	1
19	O-RING, 2-016	BUNA	1071719 (ORB-016)	1
20	CAP, LIMIT STOP, 524	NORYL	1075083 (524-BBOK)	1

NORMALLY CLOSED MODEL				
ITEM NO.	DESCRIPTION		PART NUMBER	QTY.
22	MALE PIPE PLUGS 1/8"	HDPE	1071912	1
23	SHAFT, 524, 1/4 THD	NORYL	1076238	1
24	SHAFT, SCREW	SS	1076204	1
25	WASHER	SS	1076201	1

SPRING ASSIST CLOSED MODEL				
ITEM NO.	DESCRIPTION		PART NUMBER	QTY.
26	SPRING, COMPRESSION	SS	1267398	1

SPRING ASSIST OPEN MODEL				
ITEM NO.	DESCRIPTION		PART NUMBER	QTY.
26	SPRING, COMPRESSION	SS	1078692	1

POSITION INDICATOR MODEL				
ITEM NO.	DESCRIPTION		PART NUMBER	QTY.
28	SHAFT, SCREW	SS	1076203	1
29	WASHER	SS	1076201	1
30	O-RING, 2-016	BUNA	1071671 (ORB-016)	1
31	GUIDE HOUSING, 521	SS	1075038	1
32	ROD, POS. INDICATOR, 524	SS	1076199	1
33	E - RING	SS	1076200	1
34	SHAFT, 524, POS INDICATOR	NORYL	1076205 M.03	1
35	PLUG, GUIDE HOUSING, 520	SS	1074971	1
36	O-RING, 2-106	BUNA	1071687	1
37	CAP, LIMIT STOP, 524		1075083 (524-BBOK)	1

NOTE:
 1. POSITION INDICATOR MODEL CANNOT BE COMBINED WITH NORMALLY CLOSED OR LIMIT STOP OPTIONS.
 2. POSITION INDICATOR MODEL FURNISHED WITH SPRING ASSIST OPEN OPTION.

- SEE DRAWING 1081309 FOR UNION END CONNECTORS AND GROOVED ADAPTORS
- SEE FORM 1078150 FOR THREADED SOCKET WELD ENDS AND THREADED FLANGED ADAPTORS
- SEE SHEET 1 FOR STANDARD NORMALLY OPEN MODEL

CONVERSION KITS	
DESCRIPTION	PART NO.
CONVERSION KIT (LIMIT STOP) CONSISTS OF ITEM NO'S 9, 17 THRU 21	1071161 (K524-LSC)
CONVERSION KIT (SPRING ASSIST CLOSED) CONSISTS OF ITEM NO. 26	1075124 (524-SC)
CONVERSION KIT (SPRING ASSIST OPEN) CONSISTS OF ITEM NO. 27	1075125 (524-SO)
CONVERSION KIT (POSITION INDICATOR) CONSISTS OF ITEM NO'S 28 THRU 37	1079643 (524-PICN)

REPAIR PARTS KITS	
DESCRIPTION	PART NO.
INT. PARTS KIT (LIMIT STOP) CONSISTS OF ITEM NO'S 17 THRU 20	1075111 (524-LS)
INT. PARTS KIT (NORM. CLOSED) CONSISTS OF ITEM NO'S 2, 5,10,11,23,24,25	1076307 (K524-RGN)
INT. PARTS KIT (SPRING ASSIST CLOSED) CONSISTS OF ITEM NO. 26	1075124 (524-SC)
INT. PARTS KIT (SPRING ASSIST OPEN) CONSISTS OF ITEM NO. 27	1075125 (524-SO)
INT. PARTS KIT (POSITION INDICATOR) CONSISTS OF ITEM NO'S 28 THRU 36	1077591 (524-PIN)

THIS DOCUMENT IS SOLELY THE PROPERTY OF AQ-MATIC REPRODUCTION, USE DISCLOSURE, OR TRANSMISSION OF THIS DOCUMENT OR DETAILS CONTAINED HEREIN, IN PART OR IN WHOLE, IS PROHIBITED WITHOUT THE WRITTEN CONSENT OF AQ-MATIC ENGINEERING. THIS DOCUMENT AND ANY COPIES SHALL BE RETURNED TO AQ-MATIC UPON WRITTEN REQUEST.

DO NOT SCALE DRAWING. DIMS. ARE IN INCHES [mm]
 INTERPRET DIMS AND TOLERANCES PER ASME Y14.5M -1994 UNLESS OTHERWISE SPECIFIED:
 *CORNER FILLETS R.005-.020 [.127-.508]
 TOLERANCES:
 ANGLES: ± 1°
 1 PLACE .X: ± .100 [2.54]
 2 PLACE .XX: ± .010 [0.25]
 3 PLACE .XXX: ± .005 [0.13]

THE COMPONENT, PART, OR ASSEMBLY DESCRIBED IN THIS DOCUMENT MUST COMPLY WITH THE EU (EUROPEAN UNION) DIRECTIVE: RoHS DIRECTIVE 2011/65/EC.

THIRD ANGLE PROJECTION

APPROVALS: DATE: 02-28-13

DRAWN: NE

CHECKED BY:

APPROVED:

AQ Matic

CATALOG SHEET, 524, VALVE STANDARD MODEL

SIZE: C DWG NO.: 1077655 REV.: M

SCALE: 1:2 SOLIDWORKS FORMAT SHEET 2 OF 2